

NetID Anywhere[®] PREMIUM

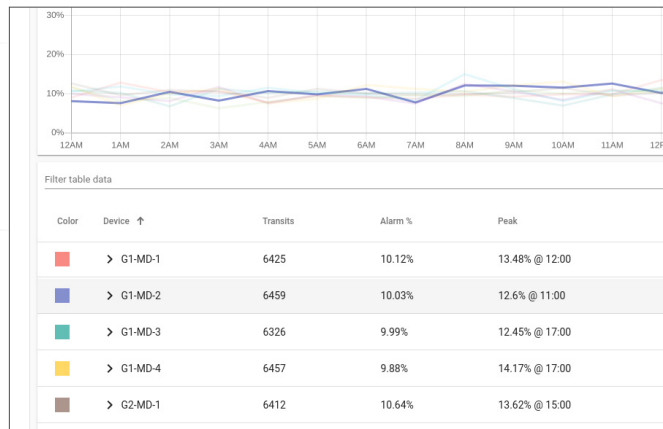
Metal Detector Network Management System



NetID Anywhere is a cloud-based network management solution for CEIA walk-through metal detectors (WTMD) and OPENGATE[®] weapons detection system that centralizes access to important statistics, automates monitoring of critical calibration settings, and much more. Designed for simple and easy implementation with limited infrastructure, NetID Anywhere allows for individual or multiple site management and is accessible from any smart device or computer with web access.

DETAILED STATISTICAL REPORTING

Data is collected and retained for each detector, including number of transits and metal alarms, allowing analysis of transit flows and alarm rate trends.

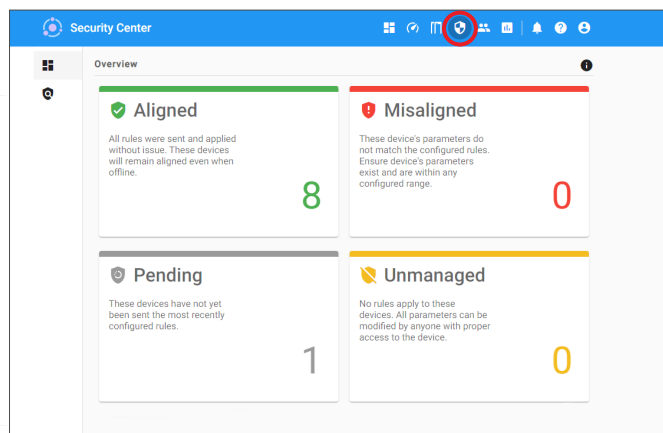


AUTOMATED MONITORING

- Monitor detector status and parameters
- Avoid accidental or unwanted setting changes
- Email notification for critical events or changes
- Logs for every event or change in the detector
- Advanced diagnostics capability
- Easy third-party integration via RESTful API

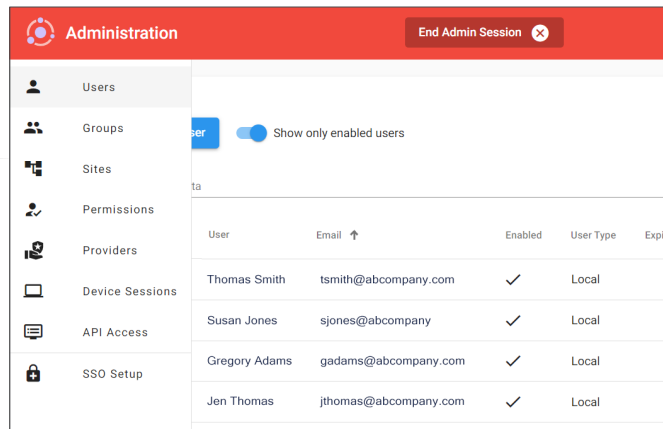
GLOBAL SETTINGS MANAGEMENT - SECURITY CENTER

- Create and manage the settings for existing or new detectors when connected to the system
- Parameters are automatically applied for a single detector, a group of detectors at an entrance, an entire site/location, and/or across all detectors for the organization
- A simple dashboard summarizes the device status in four categories: Aligned, Misaligned, Pending, and Unmanaged



FLEXIBLE USER MANAGEMENT

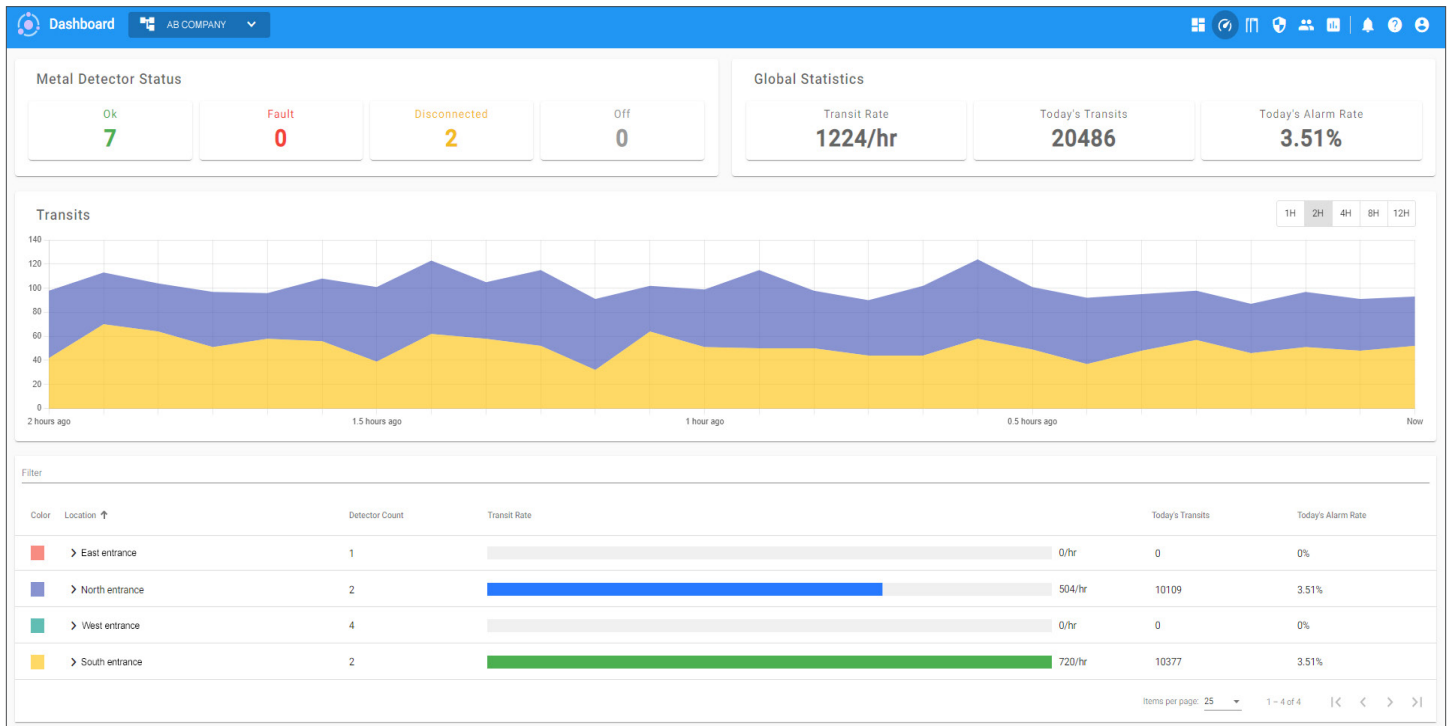
- Customize any User level access rights
- Create multiple locations for restricting visibility of the device to only each user's own facility



NETWORKING SIMPLIFIED

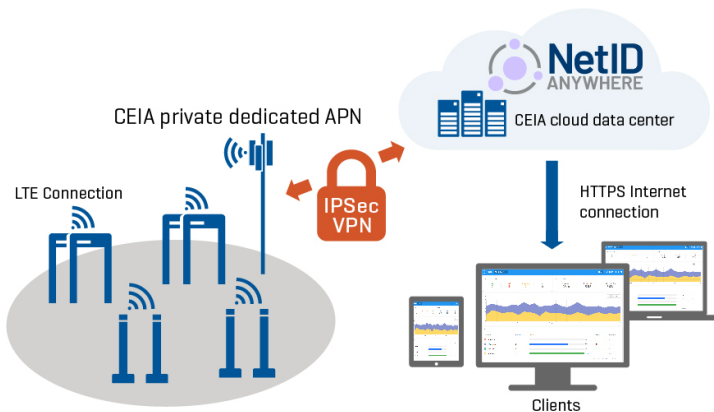
- Easy to install and integrate
- No Infrastructure required
- Secure
- Scalable
- Easy to Use, Limited Training Required
- Supports Single Sign-On (SSO) integration
- Technical support and software updates included





NetID Anywhere PREMIUM is a network management system for CEIA WTMDs and OPENGATE provided as a SaaS [Software as a Service]. OPENGATE and the metal detectors communicate to the CEIA server via an LTE connection that operates on low power and does not effect the battery life. Security is provided by end-to-end encryption. There are no capital costs associated with the system and no installation of software is required.

CONNECTION DIAGRAM



SPECIFICATIONS

LICENSE TYPE	Subscription
MINIMUM APSIM REQUIREMENTS	APSIM-IOT
MAXIMUM DETECTORS	Unlimited
CONNECTION	LTE Cellular
CUSTOMER REQUIREMENTS	Internet Access for client PCs
DATA AVAILABILITY	Data always available. CEIA managed
ACCESSIBLE FROM ANYWHERE	Yes
COMPONENTS	<ul style="list-style-type: none"> • APSIM-IOT/P (WTMD Panel models) • APSIM-IOT/E (WTMD Elliptic models) • 46982 Photocells (WTMD Elliptic models) • 113801 (OPENGATE APSIM-IOT)
MAXIMUM TRANSITS AND LOGS STORED	Unlimited
INFRASTRUCTURE	Cloud
SINGLE SIGN-ON [SSO] INTEGRATION	Standard Protocols - SAML 2.0 and OpenID Connect



CEIA USA Ltd - 6336 Hudson Crossing Parkway, Hudson Ohio 44236 USA
 Phone: 330-405-3190 • E-mail: security@ceia-usa.com • Call: 1-833-224-2342

www.ceia-usa.com

CEIA USA reserves the right to make changes, at any moment and without notice, to the models [including programming], their accessories and options, to the prices and conditions of sale - DDC-MKTG-0003