

CEIA SH15/SLE

COMPACT PYROMETERS FOR MEASUREMENT OF METALLIC SURFACES BETWEEN 80°C (176°F) AND 2000°C (3632°F)



- Temperature range from 80°C (176°F) to 2000°C (3632°F)
- Emissivity adjustable from 0.1 to 1
- High accuracy
- High-speed
- Compact design
- Available with different focus distance and aiming spot size
- LED aiming light
- Supplied with Calibration Report traceable to certified International Standards
- AISI 304 Stainless Steel Construction



www.ceia-usa.com

CEIA USA reserves the right to make changes, at any moment and without notice, to the models (including programming), their accessories and options, to the prices and conditions of sale

CEIA SH15/SLE

PYROMETERS FOR MEASUREMENT BETWEEN 80°C (176°F) TO 2000°C (3632°F)

CEIA offers a wide range of infrared optical sensors equipped with low-intensity LED aiming which cover a reading range from 80°C to 2000°C (176°F to 3632°F).

The CEIA SH15/SLE Infrared Sensors can be connected to the Power and Master Controller V3 Units to accurately stabilize the heating process at the required temperature values. The reduced overall dimensions allow an easy integration of the pyrometer in automatic production systems.

SH15/SLE Pyrometers Selection

MODEL	
SH15/SLE-550-D1	80 ... 700°C (176 ... 1292°F)
SH15/SLE-550-D2	120 ... 900°C (248... 1652°F)
SH15/SLE-550-D3	200 ... 1600°C (392... 2912°F)
SH15/SLE-550-D4	500 ... 2000°C (932... 3632°F)

Technical Data

SH15/SLE	
TEMPERATURE RANGE	80 ... 2000°C (176... 3632°F)
TEMPERATURE RESOLUTION	0.1 °C (up to 999.9 °C) 1 °C (above 1000 °C)
EMISSIVITY RANGE	0.1-1.0
READING SPOT DIAMETER	see table
FOCUS DISTANCE	see table
RESPONSE TIME	100 uS Time Constant
MEASUREMENT SPOT AIMING	High Definition, 620 nm
INTERNAL DIGITAL CONTROLS	Offset and Range Calibration Parameters Environmental Temperature Measurement and Correction Automatic Gain Range Selection
COMPATIBLE CONTROLLERS	CEIA Power Controller v3, CEIA Master Controller v3, CEIA Net Master Controller
POWER SUPPLY	+/- 15 V - +10/-5 mA, directly supplied by CEIA Controllers
CONNECTION CABLE	Diameter 0.19" (4.8 mm) x Length 4.92 ... 13 ft (1.5 ... 4 m)
HOUSING	AISI 304 Stainless Steel
WEIGHT	0.22 lbs (100 g)
HOUSING PROTECTION CLASS	IP65
OPERATING TEMPERATURE	32°F to 149°F (0 °C to + 65 °C)
STORAGE TEMPERATURE	-13°F to 158°F [- 25 °C to + 70 °C]
CONFORMITY	Complies with international standards currently applicable for Electrical Safety and Electromagnetic Compatibility (EMC)

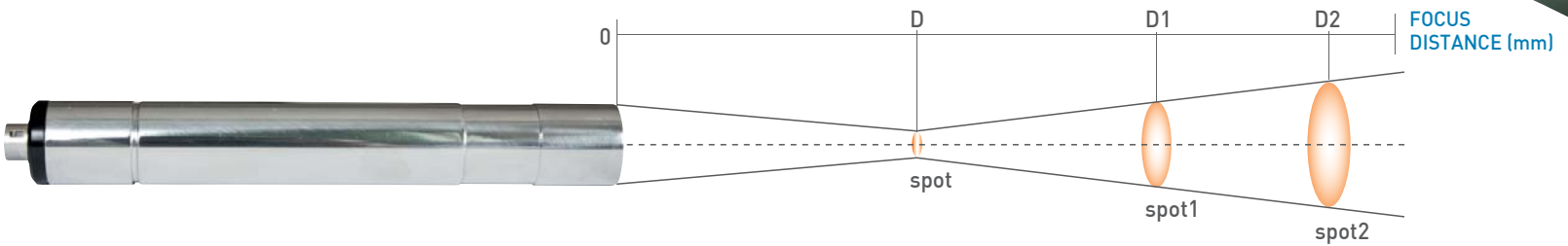
TYPICAL APPLICATIONS

- ANNEALING
- BONDING
- BRAZING
- CAP SEALING
- CURING
- FORGING
- HARDENING
- HOT FORMING
- LOCALIZED HEATING
- MELTING
- METAL GLASS SEALING
- NORMALIZING
- PREHEATING
- SINTERING
- SHRINK FITTING
- TEMPERING
- TIN SOLDERING





Model Configuration and Optics Data



MODEL	Close-up lens	D distance (mm)	Spot diameter (mm)	D1 distance 1 (mm)	Spot 1 diameter (mm)	D2 distance 2 (mm)	Spot 2 diameter (mm)
SH15/SLE-550-D1 80 ... 700°C (176 ... 1292°F)	No	550	12.5	1000	36	2000	86
	CL240/SH15	240	4.5	500	24	1000	36
	CL120/SH15	120	2.5	250	19	500	52
	CL60/SH15	60	0.5	150	18.5	300	51
SH15/SLE-550-D2 120 ... 900°C (248... 1652°F)	No	550	4.5	1000	21	2000	57
	CL240/SH15	240	1.5	500	18	1000	51
	CL120/SH15	120	1	250	17	500	46
	CL60/SH15	60	<0.4	150	19	300	50
SH15/SLE-550-D3 200 ... 1600°C (392... 2912°F)	No	550	2	1000	16.5	2000	47
	CL240/SH15	240	0.6	500	16	1000	47
	CL120/SH15	120	<0.4	250	15	500	44
	CL60/SH15	60	<0.4	150	18	300	49
SH15/SLE-550-D4 500 ... 2000°C (932... 3632°F)	No	550	2	1000	16.5	2000	47
	CL240/SH15	240	0.6	500	16	1000	47
	CL120/SH15	120	<0.4	250	15	500	44
	CL60/SH15	60	<0.4	150	18	300	49

Accessories

CODE	DESCRIPTION
CL240/SH15	Additional lens SH15 FOCUS: 240 mm
CL120/SH15	Additional lens SH15 FOCUS: 120 mm
CL60/SH15	Additional lens SH15 FOCUS: 60 mm
49439	Connection Cable: diameter 0.19" (4.8 mm) x length 4.92 ... 13 ft (1.5 ... 4 m)
23497	ES3M micrometric optical sensor base
21871	SH23 optical sensor base

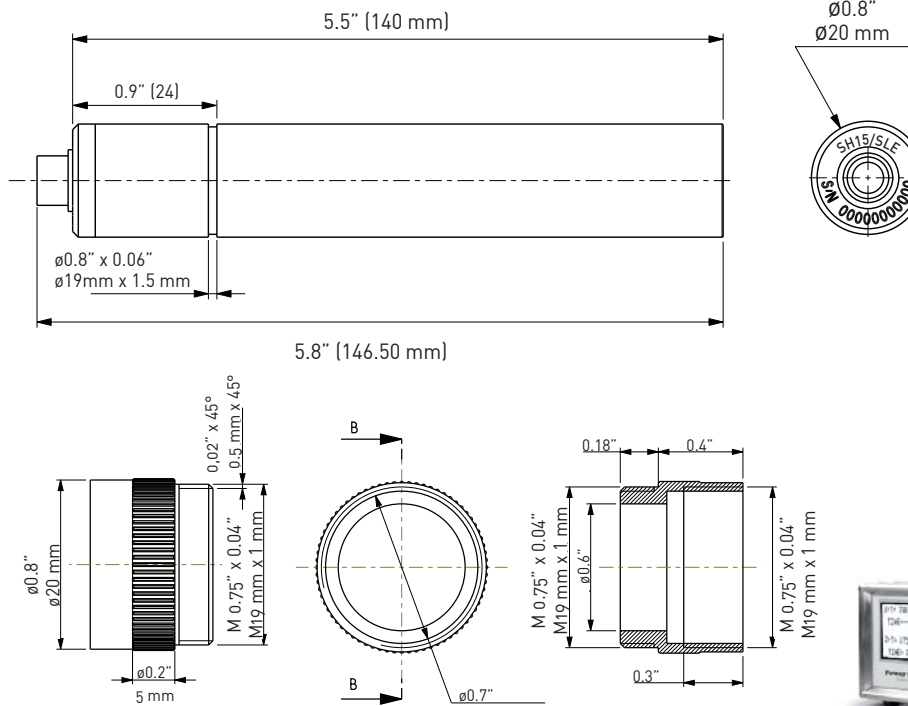


ES3M, MICROMETRIC OPTICAL SENSOR BASE

CEIA SH15/SLE

PYROMETERS FOR MEASUREMENT BETWEEN 80°C (176°F) TO 2000°C (3632°F)

Dimensions



ADDITIONAL LENS

Thermal Profile Monitoring (optional)

The Thermal Profile System allows programming, quality certification and traceability of each thermal cycle

Thermal Profile Quality Control

- > Up to 20 Programmable Temperature and Time Segments per Process
- > Up to 100 Different Storable Processes
- > Maximum Power Output Programmable for Each Individual Segment
- > Temperature Tolerance Window Programmable for Each Individual Segment
- > Out-of Tolerance and End-of-Cycle Outputs for Each Process

RELATED EQUIPMENT

Along with the CEIA optical temperature sensors (SH15/SLE series), the CEIA Controllers allow the implementation of efficient induction soldering systems and achievement of completely repeatable, economical heating processes and finished products

MASTER CONTROLLER V3

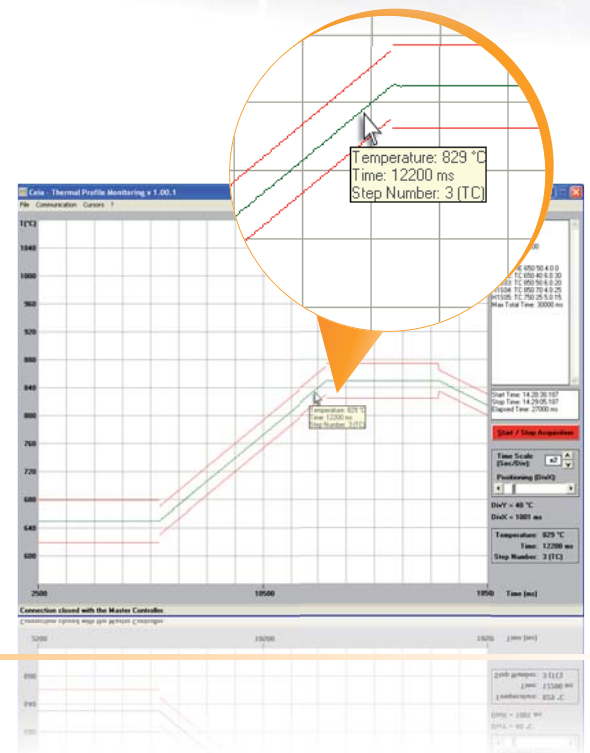
Integrated Controller of Heating and Soldering Cycles.

POWER CONTROLLER V3

Integrated Controller of Heating Cycles.

NET MASTER CONTROLLER

Power Cube Generators Network Controller.



CEIA USA Ltd - 9155 Dutton Drive, Twinsburg OH - 44087 USA
 Phone: 330-405 3190 - Fax 330-405 3196 - e-mail: induction@ceia-usa.com

www.ceia-usa.com

Call 888-532-CEIA

DP018K0004V2US-57696