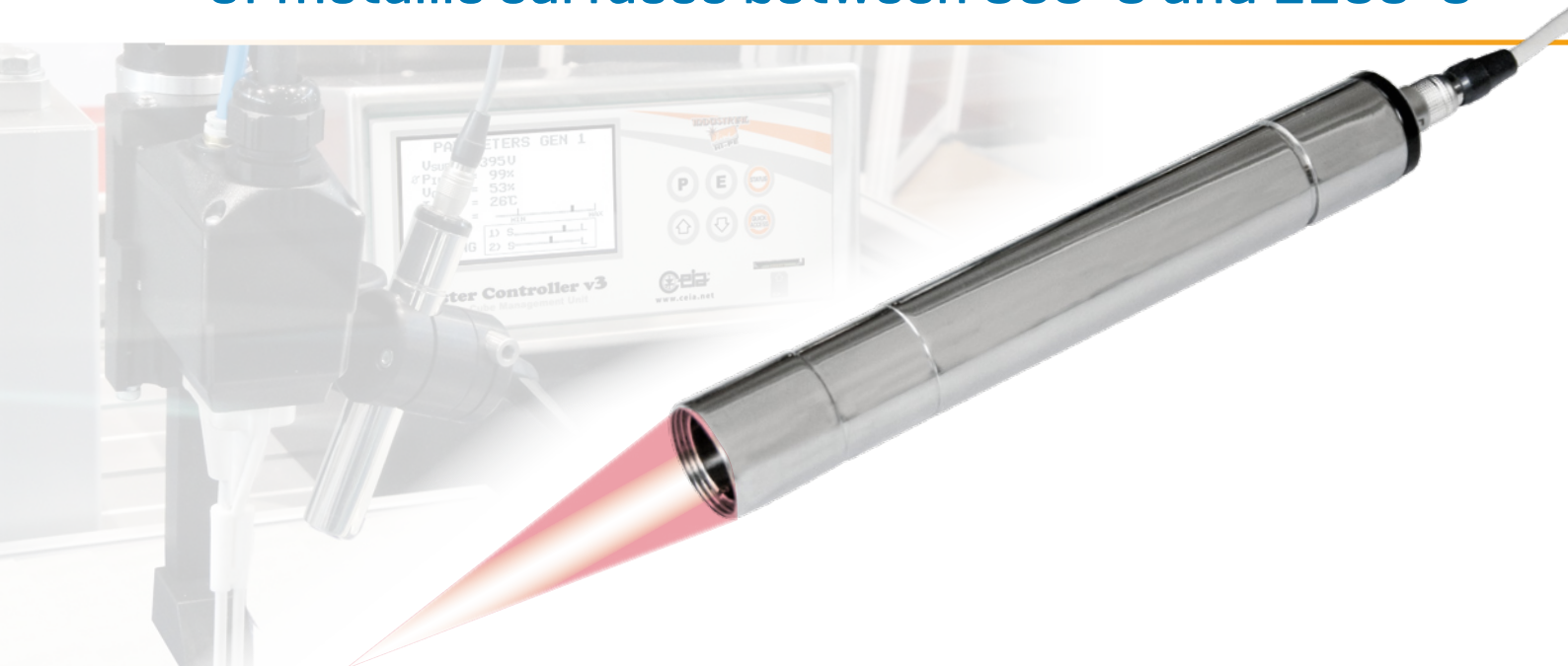


CEIA SH2C/SLE

Dual-Color Compact Pyrometer for Measurement of metallic surfaces between 300°C and 2200°C



- Temperature Range
 - > Dual-color mode: 600 ÷ 2200 °C
 - > Single-color mode: 300 ÷ 2200 °C
- High Accuracy
- High-Speed
- Compact design
- Available with different focus distance and aiming spot size
- LED aiming light
- Supplied with Calibration Report traceable to certified International Standards
- AISI 304 Stainless Steel Construction



Scan this code to get more info

www.ceia.net



CEIA SH2C/SLE DUAL-COLOR COMPACT PYROMETER

Specifications

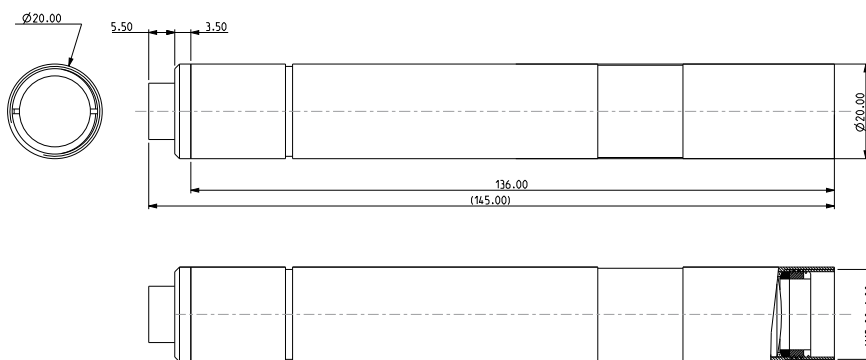
	SH2C/SLE Single-color mode	SH2C/SLE Dual-color mode
TEMPERATURE RANGE	300 ÷ 2200°C	600 ÷ 2200°C
TEMPERATURE RESOLUTION	0.1 °C (up to 999.9 °C) - 1 °C (above 1000 °C)	
EMISSIVITY RANGE	0.1-1.0	N/A
READING SPOT DIAMETER	see table	
FOCUS DISTANCE	see table	
RESPONSE TIME	100 µs Time Constant	
MEASUREMENT SPOT AIMING	High Definition, 620 nm wavelength led beam	
INTERNAL DIGITAL CONTROLS	Offset and Range Calibration Parameters	
	Environmental Temperature Measurement and Correction	
	Automatic Gain Range Selection	
COMPATIBLE CONTROLLERS	CEIA Power Controller v3, CEIA Master Controller v3, CEIA Net Master Controller	
POWER SUPPLY	+/-15 V - +10/-5 mA, directly supplied by CEIA Controllers	
CONNECTION CABLE	4.8 mm (diameter) - 1.5 ... 4 m (length)	
HOUSING	AISI 304 Stainless Steel	
WEIGHT	100 g	
HOUSING PROTECTION CLASS	IP65	
OPERATING TEMPERATURE	0 °C to + 65 °C	
STORAGE TEMPERATURE	- 25 °C to + 70 °C	
CONFORMITY	Complies with international standards currently applicable for Electrical Safety and Electromagnetic Compatibility (EMC)	

TYPICAL APPLICATIONS

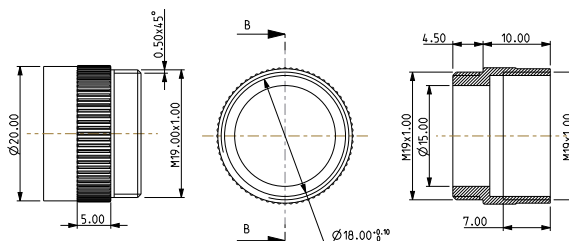
- METAL PROCESSING - INDUCTION PROCESSES: HARDENING, WELDING, FORGING, BRAZING, SOLDERING, ETC.
- METAL PROCESSING - NOBLE METALS MELTING AND PURIFYING
- METAL PROCESSING - WIRE/ROD MILL
- SILICON PROCESSING
- GLASS INDUSTRY - GOB TEMPERATURE MEASUREMENT
- CEMENT INDUSTRY - CLINKER TEMPERATURE IN ROTARY KILNS



DIMENSIONS [mm]



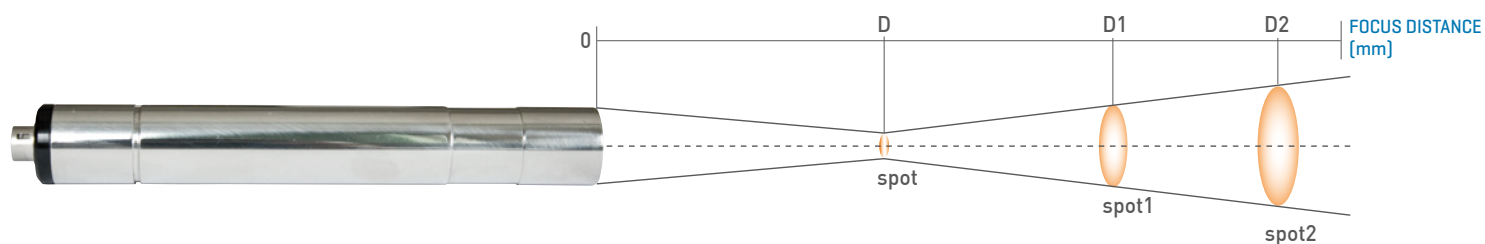
SH2C/SLE



Additional lens



Model Configuration and Optics Data



MODEL	Close-up lens	D distance [mm]	Spot diameter [mm]	D1 distance 1 [mm]	Spot 1 diameter [mm]	D2 distance 2 [mm]	Spot 2 diameter [mm]
SH2C/SLE 300 ... 2200°C	Included	550	12.5	1000	36	2000	86
	CL240/SH15	240	4.5	500	24	1000	63
	CL120/SH15	120	2.5	250	19	500	52
	CL60/SH15	60	0.5	150	18.5	300	51



ACCESSORIES

- Cooling jacket unit with integrated Air Purge
Cod. #: SLE-PURGE-COOL



- Close-up lens SH15-Focus: 240 mm
Cod. #: CL240/SH15



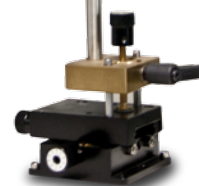
- Close-up lens SH15-Focus: 120 mm
Cod. #: CL120/SH15



- Close-up lens SH15-Focus: 60 mm
Cod. #: CL60/SH15



- ES3M micrometric optical sensor base
Cod. #: 23497



- 90° view Mirror System
Cod. #: SLE-90D-BD



- Air Purge Unit
Cod. #: SLE-PURGE



- Connection Cable: 4.8 mm [diameter] - 1.5 ... 4 m [length] Cod. #: 49439

- SH23 optical sensor base
Cod. #: 21871

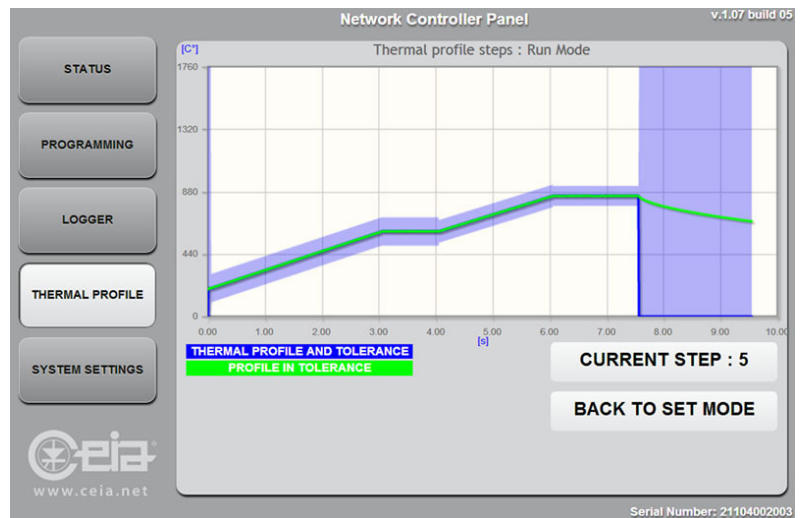
CEIA SH2C/SLE DUAL-COLOR COMPACT PYROMETER

Thermal Profile Management and Monitoring [optional]

The Thermal Profile System allows programming, Quality certification and traceability of each thermal cycle

Thermal Profile Quality Control

- Up to 20 Programmable Temperature and Time Segments per Process
- Up to 100 different storable processes
- Maximum Power Output Programmable for Each Individual Segment
- Temperature Tolerance Window Programmable for Each Individual Segment
- Out-of Tolerance and End-of-Cycle Outputs for Each Process



Real-time Thermal Profile screen

Related equipment

Along with the CEIA optical temperature sensors (SH/SLE series), the CEIA Controllers allow the implementation of efficient induction soldering systems and achievement of completely repeatable, economical heating processes and finished products

- Master Controller v3 > Integrated Controller of Heating and Soldering Cycles
- Power Controller v3 > Integrated Controller of Heating Cycles
- Net Master Controller > Power Cube Generators Network Controller



COSTRUZIONI ELETTRONICHE INDUSTRIALI AUTOMATISMI

Zona Ind.le 54/G, 52041 Vicinaggio - Arezzo (ITALY)

Tel. +39 0575-4181 Fax +39 0575-418287

E-mail: powercube@ceia-spa.com

DP018K0006v1000UK-63942