

CWD[®]

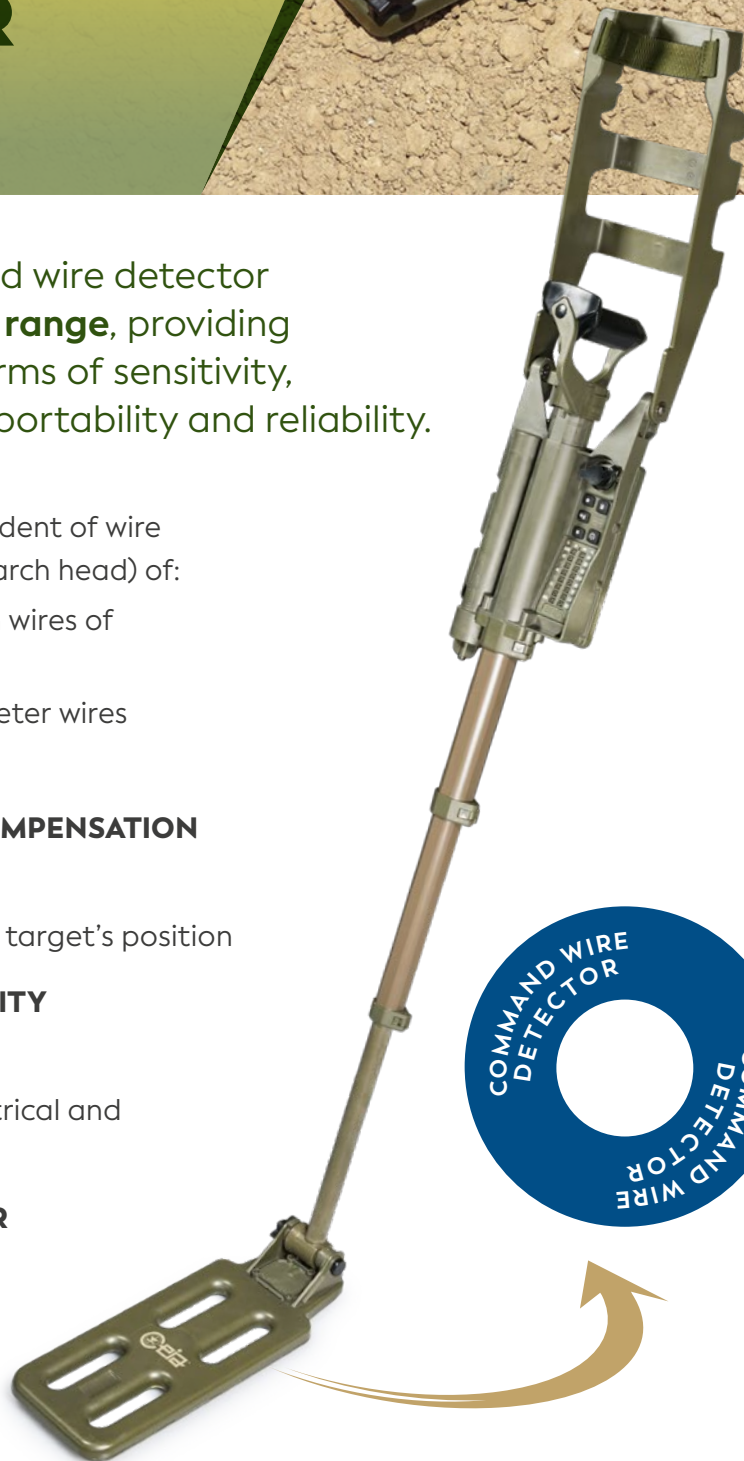
LIGHTWEIGHT COMPACT CABLE AND COMMAND WIRE DETECTOR

NSN: 6665-15-0161821

The **CEIA CWD** cable and command wire detector complements the **CMD detectors range**, providing overall superior performance in terms of sensitivity, direction-independent detection, portability and reliability.

WD

- **EFFECTIVE DETECTION** (independent of wire orientation with respect to the search head) of:
 - ▶ Command wires and connection wires of any diameter and type
 - ▶ Extremely thin up to large diameter wires
 - ▶ Shallow and buried wires
- **EXCLUSIVE AUTOMATIC SOIL COMPENSATION SYSTEM**
- **ACCURATE PIN-POINTING** of the target's position
- **HIGH DISCRIMINATION CAPABILITY** for adjacent targets
- **EXTREMELY HIGH LEVEL** of electrical and mechanical **RELIABILITY**
- **INTEGRATED BATTERY CHARGER**
- **LONG-LASTING BATTERY LIFE**



COMMAND WIRE
DETECTOR

COMMAND WIRE
DETECTOR



www.ceia-usa.com

GSA Contract Holder

DESCRIPTION

The **CEIA CWD** is a **lightweight and portable device featuring the capability of detecting command wires of any diameter and type** with high sensitivity, in conductive and non-conductive soils, including laterite and magnetite:

- ✓ The detector comprises a search head, a control unit, a telescopic pole and an elbow support all jointed together in a one-piece foldable design that allows **the CWD to be operational in a very short time and easily carried everywhere.**
- ✓ **Detection is independent of wire orientation with respect to the Search Head.** In addition, the CWD does not require any manual calibration: optimum sensitivity is ensured over all types of terrain due to CEIA's exclusive **Automatic Soil Compensation System.**
- ✓ The detector is manufactured in compliance with the ISO-9001 standard and has been designed to meet and exceed the relevant Military Environmental Standard most stringent operational detection requirements (**MIL-STD -810G**).
- ✓ The detector is equipped with a **built-in Ni-MH battery charger** which allows the batteries to be recharged (in 3 hours max) without the need to extract them from the unit.

SPECIFICATIONS

PROMPTNESS	Switch-on time: 5 sec.	
	Soil Compensation: 16 sec.	
DIMENSIONS	Search head (W x L): 5.5" x 13.8" (140 mm x 350 mm)	
	Folded: 15.3" x 6.3" x 3.3" (390 mm x 160 mm x 85 mm)	
	Fully extended: 51.2" (1300)	
	Carry bag: 15.6" x 8.1" x 5.1" (395 mm x 205 mm x 130 mm)	
WEIGHT	Detector (batteries included): 4.96 lbs	
	Carry bag: 1.32 lbs	
	Earphone: 0.34 lbs	
POWER SUPPLY	Battery	3 x 1.2V Ni-MH C cells - HR14
	Battery Life	8 h (continuous use)
	Battery Charge Time	3.5 h (built-in battery charger)
	Battery Cycle Life	2 years of daily use (≥ 500 cycles)
	External AC/DC Adapter	100-240 Vac (50/60Hz) - 25 W
PROTECTION DEGREE	IP68 (IEC 529)	
ENVIRONMENTAL DATA	Storage temperature	-67°F to 185°F (-55°C to +85°C)
	Operating temperature	-51°F to 158°F (-46°C to +70°C)
CONFORMITY	Complies with the international standards on radio interference and human exposure to electromagnetic fields	

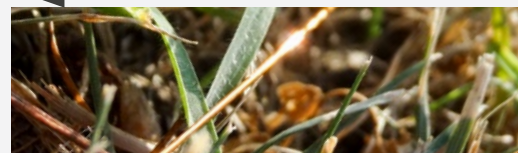
TWISTED PAIR



MULTI-STRAND WIRE



SINGLE THIN WIRE



CWD DETECTING SET

- **DETECTOR**
- **INSTRUCTION MANUALS**
- **BATTERIES 1.2V Ni-MH, ANSI C**
- **LEG STRAP** for the carry bag
- **PLASTIC LOCKING BOLT** for search head (spare)
- **EARPHONE**
- **HOOK/CLIP** for earphone
- **10-m IED WIRE TEST SAMPLE**
- **AC POWER SUPPLY** for the built-in battery charger, with power cords (UL and CEE plug)
- **DC POWER SUPPLY CABLE** for the built-in battery charger fitted with a vehicle cigarette lighter plug



CARRY BAG



CEIA USA Ltd - 6336 Hudson Crossing Parkway, Hudson OH 44236
P 330-405 3190 • **F** 330-405 3196 • **E** gsmd@ceia-usa.com • **Call** (833) 224-2342 (CEIA)

www.ceia-usa.com

CEIA USA reserves the right to make changes, at any moment and without notice, to the models (including programming), their accessories and options, to the prices and conditions of sale - DP140K0022v3000uUS (2022)